

State of Wyoming Corner Record

(In compliance with the CORNER PERPETUATION AND FILING ACT, Wyoming Statutes, 1977, Section 36-11-101, et. seq., and the Rules and Regulations of the Board of Registration for Professional Engineers and Professional Land Surveyors.)

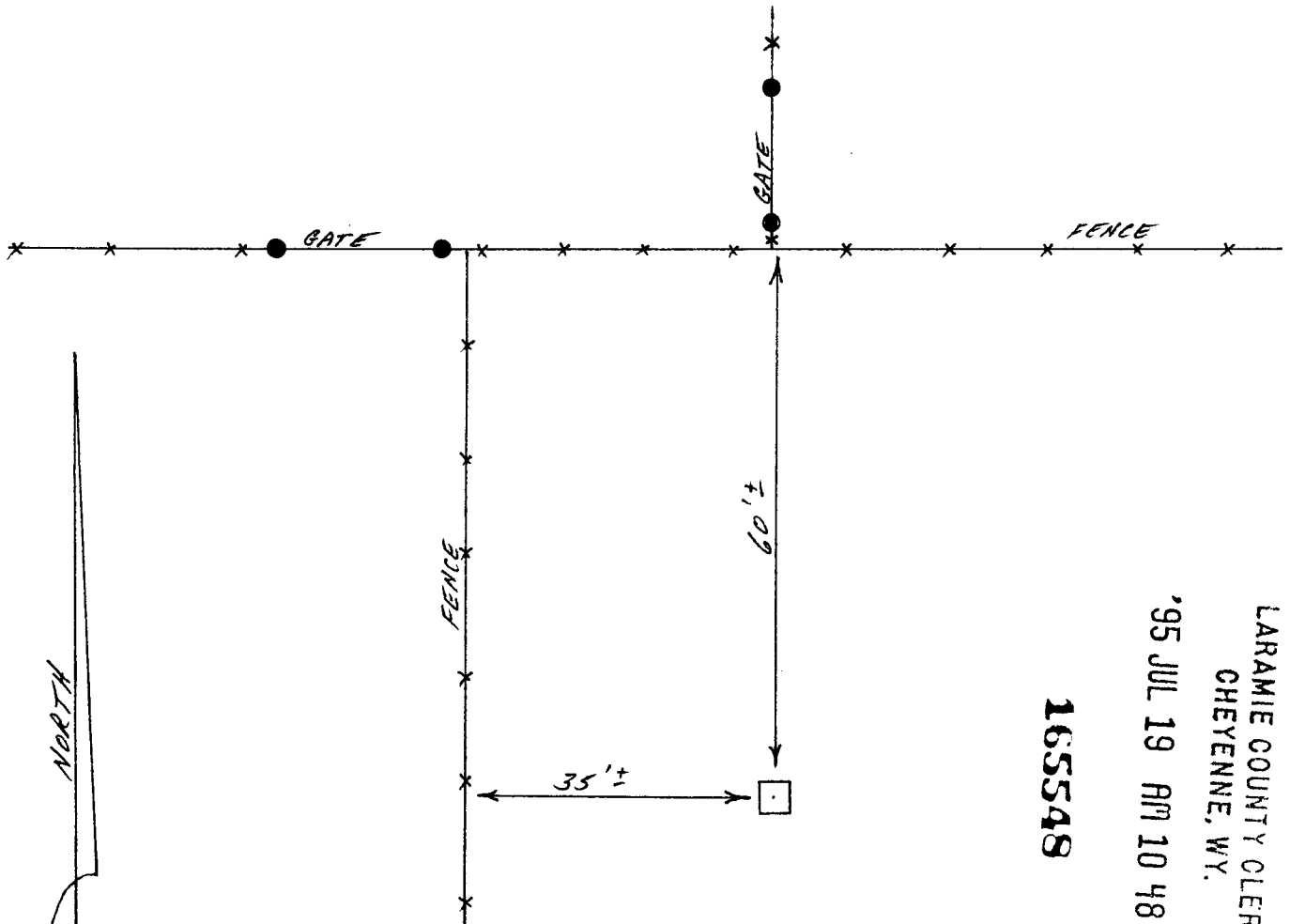
Reverse side of this form may be used if more space is needed.

Record of original survey and citation of source of historical information (if corner is lost or obliterated). Description of corner monumentation evidence found and/or monument and accessories established to perpetuate the location of this corner. Sketch of relative location of monument, accessories, and reference points with course and distance to adjacent corner(s) (if determined in this survey). Method and rationale for reestablishment of lost or obliterated corner.

SECTION CORNER common to sections 8, 9, 16 and 17, T.15N., R.66W.

G.L.O. - Granite Stone 20" x 12" x 10"

FOUND - Etched stone laying upon the ground surface.



SCALE
1" = 20'

LARAMIE COUNTY CLERK
CHEYENNE, WY.
'95 JUL 19 AM 10 48
165548

Preliminary measurements to other corners in the area indicate that the position of this stone may be very questionable. Additional measurements would be necessary in order to affirm the position as being true.

Date of Field Work: 11/17/90 Office Reference: _____

CROSS INDEX DIAGRAM

A	1	2	3	4	5	6	7	8	9	10	11	12	13	14	15	16	17	18	19	20	21	22	23	24	25
B																									
C		8			5			4					3							2					1
D																									
E																									
F																									
G																									
H																									
I																									
J																									
K																									
L																									
M																									
N																									
O																									
P																									
Q																									
R																									
S																									
T																									
U																									
V																									
W																									
X																									
Y																									
Z																									

Firm/Agency, Address

PREPARED BY:
John J. Studley
3509 Frontier St.
Cheyenne, WY 82001
1-307-634-3358

This corner record was prepared by me or under my direction and supervision.

SEAL & SIGNATURE



BOOK 1402

1130

Corner Name: NORTHWEST Section: 16 T. 15N R. 66W; 6TH P.M. Cross-Index No.: J-9
SBRPEPLS/PLSW: March 1994 (CLCR_SJA)